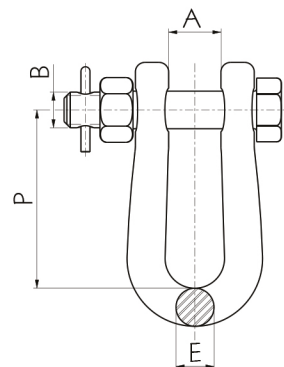


Manilha

Grillete

Shackle



Referência	Ruptura	Dimensões   Dimensiones   Dimensions				Peso
Nº Catalogo	Rotura	(mm)				Peso Neto
Cat. Number	Ultimate Strength	A	B	E	P	Net Weight
	(kN)					(kg)
F1202	120	22	5/8"	16	75	0,590
F1202-02	120	22	3/4"	16	75	0,700
F1202-03	120	27	5/8"	16	75	0,599
F1202-10	120	26	3/4"	16	75	0,712
F1205	120	27	5/8"	16	95	0,665
F1205-01	120	33	5/8"	16	90	0,666
F1217	240	22	3/4"	19	90	0,994
F1217-02	240	25	7/8"	19	90	1,144
F1217-03	240	22	7/8"	19	90	1,119
F1217-04	240	25	3/4"	19	90	1,037
F1217-08	240	28	3/4"	19	90	1,022
F1226	240	22	7/8"	19	74	1,054
F1258	240	27	7/8"	25	449	4,632
F1258-01	240	27	7/8"	25	503	5,048
F1258-02	240	27	7/8"	25	538	5,318
F1258-03	240	27	7/8"	25	573	5,588
F1258-04	240	27	7/8"	25	608	5,857
F1235-01	240	23	3/4"	19X23	135	1,391
F1206	320	27	7/8"	24	90	1,847
F1206-02	320	27	1"	24	90	1,999
F1206-06	360	32	1"	24	90	2,038
F1246-02	360	35	1"	28,5	120	2,713
F1246	480	33	1.1/8"	28,5	120	2,904

MATERIAL: Aço forjado galvanizado a quente  
Acero forjado galvanizado en caliente  
Forged steel, hot dip galvanized