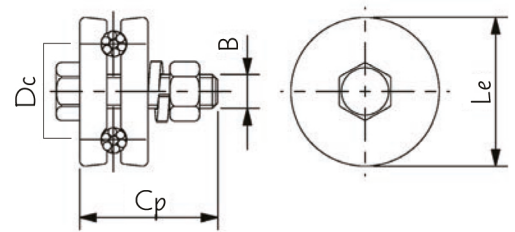
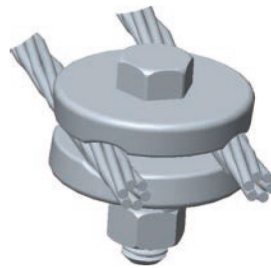


Presilha Circular

Grapa Paralela Circular

Circular Clamp



Referência N° Catalogo Cat. Number	Dimensões Dimensiones Dimensions (mm)					Peso
	BxCp	Dc	Le	Acomodação Alojamiento Clamping Range ØMin ØMax		Peso Neto Net Weight (kg)
F1605				1/2" x 2"	35	55
F1605-01	5/8" x 2.1/2"	35	55	6,0	9,5	0,474
F1605-02	1/2" x 2"	35	55	5,0	7,0	0,410
F1605-04	5/8" x 2"	35	55	6,0	9,5	0,456
F1605-05	5/8" x 3. 1/4"	35	55	6,0	9,5	0,510
F1605-09	1/2" x 2. 1/4"	35	55	6,0	9,5	0,404
F1605-10	1/2" x 2. 1/2"	35	55	6,0	9,5	0,416

MATERIAL: Aço forjado galvanizado a quente
Acero forjado galvanizado en caliente
Forged steel, hot dip galvanized