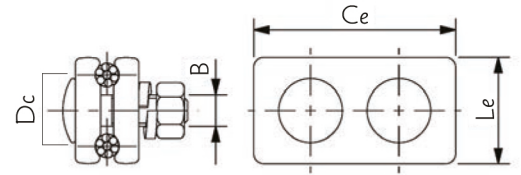
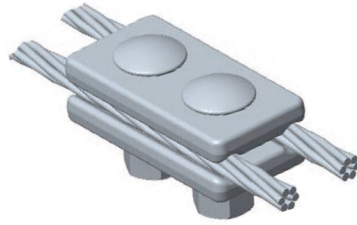


## Prensa Fios

### Grapa Paralela con dos Tornillos

### Parallel Clamp With Two Bolts



Referência N° Catalogo Cat. Number	Dimensões   Dimensiones   Dimensions (mm)						Peso
	B	Ce	Le	Dc	Acomodação Alojamiento Clamping Range ØMin ØMax		Peso Neto Net Weight (kg)
F1601	1/2"	80	42	28	6,0	9,5	0,571

MATERIAL: Aço forjado galvanizado a quente  
Acero forjado galvanizado en caliente  
Forged steel, hot dip galvanized